



Doors & Jambs

Rigid steel construction and durable finish

Heavy-duty hinge system

Pre-engineered for optimal compatibility with Servacor frames

Variety of inset materials available

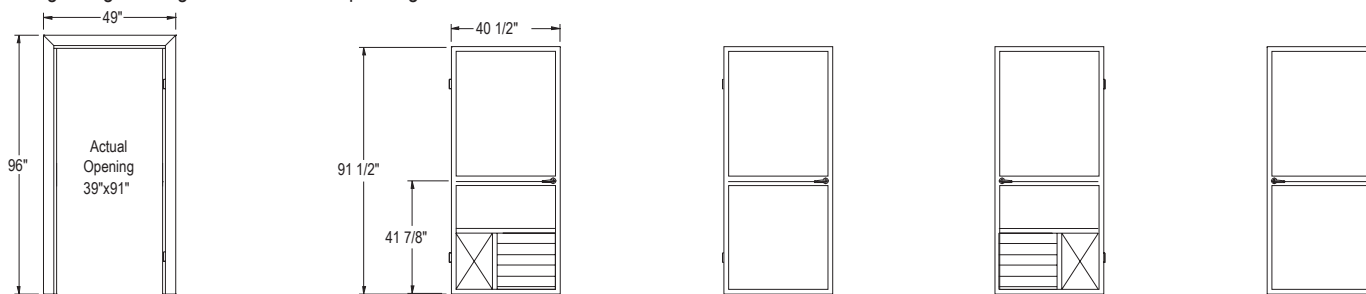
Available in heights to meet standard room dimensions

STRUCTURAL INTEGRITY All doors and jambs are welded using cold-rolled heavy-gauge tubular steel. Each is then polyurethane powder-coated and baked, resulting in a durable chip-resistant finish that withstands frequent cleansing and is contamination-free.

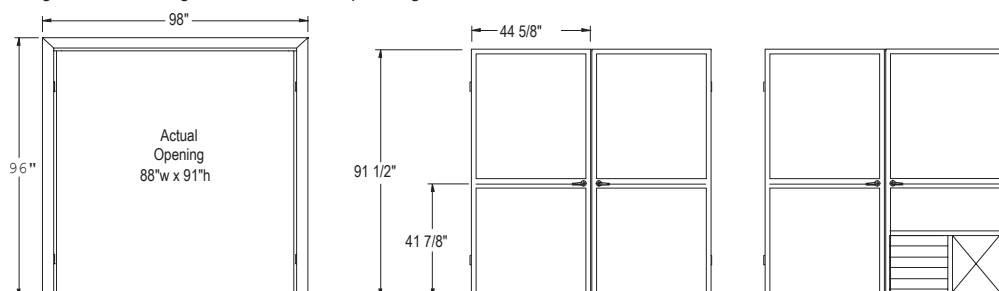
UNIQUE AND INTELLIGENT DESIGN The swing doors fit easily into the jambs which in turn bolt to other Servacor frames using barrel-nuts that act to tighten the seal with each turn. Servacor door jambs are factory gasketed and designed to correspond to modular room dimensions, through the doors remain a manageable size. The sliding door mounts to adjacent frames on the outside of the room.



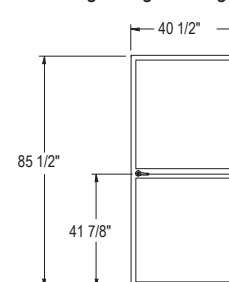
8' High Single Swing Doors and Corresponding Jamb



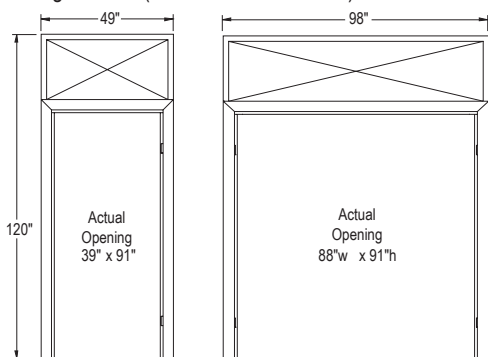
8' High Double Swing Doors and Corresponding Jamb



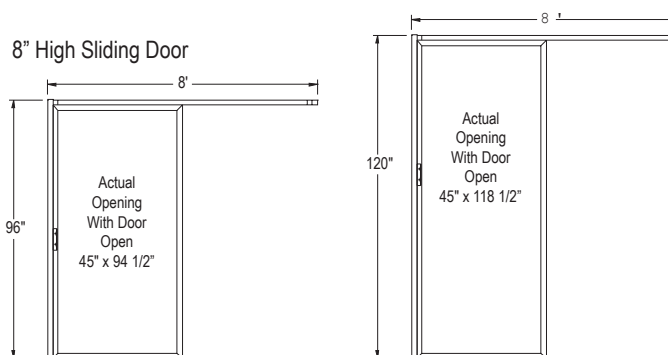
7.5' High Single Swing Door*



10' High Jamb (Use Standard 8' Doors)



10" High Sliding Door



**Note regarding 7.5 High Doors and Jamb: Floor to handle dimensions remain the same as those in 8' High examples. All other vertical dimensions are reduced by 6', including "actual opening" dimensions.*

SPECIFICATIONS

Dimensions

Standard height is 8'

Steel

Doors: 1.75" x 1.75" x .095"

Jamb: 2"x4" heavy-gauge (0.095") cold-rolled steel tube

Weld

MIG welded using 75/25 CO₂+Argon gas for clean, precise and strong welds

Finish

White polyurethane powder-coat, baked at 450 degrees

OPTIONS

Handle options include standard pull handles, latch handles and keyed lock; Panic bar available for single swing door; latch available on one of a double swing set.

Standard inset materials include 1/4" clear acrylic, 1/4" aluminum honeycomb, 1/4" high-density PVC, Clear 16 mil flexible PVC, White 12 mil flexible PVC.*

*Note: Sliding door is limited to rigid insets

Application specific material available upon request include UV Yellow, Opaque black/green, static-dissipative and polycarbonate.