



# Uni-Grid

Fully welded steel grid units

Load-bearing and walkable

Truly modular for easy room expansion

Guaranteed leak-free at T-bar intersections

Spans up to 20' without additional downposts

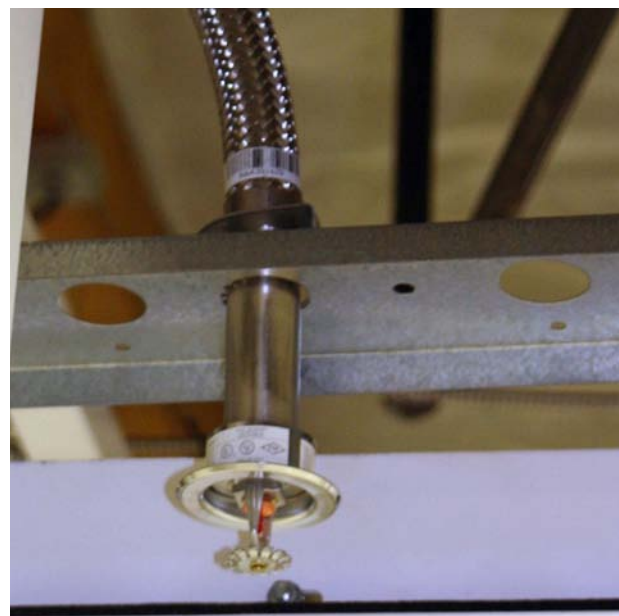
**STRUCTURAL INTEGRITY** Servicor's unique ceiling system is welded of 1/8" thick steel to ensure structural integrity and superior seismic strength. The all-welded modules are designed to support 250 pounds of weight in addition to the weight of the drop-in components. Rearranging and replacing lights, filters, tiles and prefilter is handled with ease.

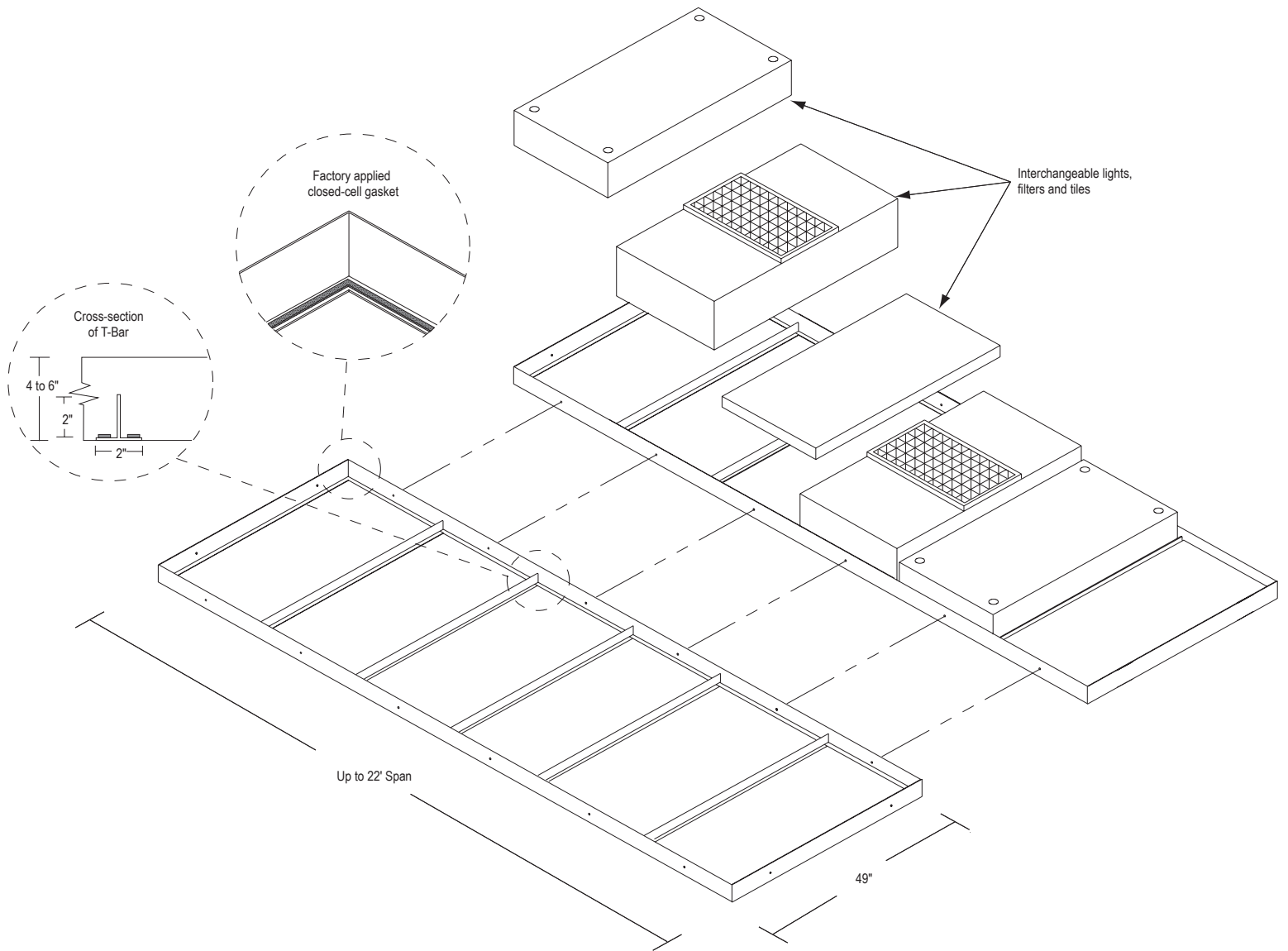
**INTELLIGENT DESIGN** Each of the approximately 2'x4' cell openings features non-memory closed cell gasketing. The combination of our all-welded construction and the special factory-affixed gasketing insures a tight seal and superior protection against leaks using standard 2'x4' drop-in components.

The system's convenient design allows for easy modular cleanroom expansion and relocation. To expand a room, simply disassemble the wall in the direction of expansion, add new grid and wall modules and reattach the existing wall panels.

The Uni-Grid ceiling system is polyurethane powder-coated then baked for a consistent, washable and chip-resistant finish.

**UNIQUE** No other manufacturer provides a ceiling system as strong, durable and versatile as Servicor's Uni-Grid system.





## SPECIFICATIONS

### **Dimensions**

Spans up to 20' without additional downposts, in units of 2 feet

Widths in units of 4 feet

Correspond to Servacor nominal room dimensions

Height (max) equal to 4" for spans up to 16', 6" for spans from 16' to 20'

### **Finish**

All members are polyurethane powder-coated white unless otherwise specified, and baked at 450 degrees

### **Weld**

MIG Welded using 75/25 CO<sub>2</sub> + Argon gas for clean, precise and strong welds

### **Materials**

1/8" thick cold-rolled steel flat bar

Gasketing; non-memory, closed-cell